



Cowra Hospital
Landscape REF
December 2022



SITE IMAGE
Landscape Architects



Contents

- Landscape Summary
- Greener Places and Better Places Landscape Response
- Design Vision & Principles
- Site Plan
- Liverpool Street Garden
- Rehabilitation Courtyard
- Cultural Garden and Gathering Space
- Carpark and Dropoff
- Emergency Department and Courtyard
- Lightwell Garden
- Maternity Courtyard
- Landscape Concept
- Landscape Site Plan

Landscape Summary

Introduction

The landscape vision for the Cowra Hospital project is to provide external spaces and a landscape setting which complement the facilities of the for the use of staff, clients and their visitors.

At the forefront of the landscape design are the following principles

- Connecting with Country incorporating indigenous knowledge, stories and practices in the design and function of landscape spaces
- Care for country protect and improve natural systems that interact with the site
- Community facing well functioning, equitable spaces to welcome the community
- Encourage healing and Wellness - a safe environment for users and staff

The Site

The Cowra Hospital site sits on the southern side of Bellevue Hill with the site falling away from the Northern boundary. The site is currently occupied by the existing hospital to be demolished a park is proposed to the this area which will provide pedestrian connection across the significant level change.

There is limited existing vegetation on site with likely required earthworks and demolition necessitating removal. Existing street trees will be retained.

Connecting with Country

A co-design has been initiated with a Walking on Country day with local indigenous groups.

Input from the community will inform the direction and development of the landscape design though spatial design, storytelling, user experience, materiality, and planting.

A program of ongoing co-design is proposed to ensure the delivery of landscape spaces to service the community in a culturally appropriate way.

From initial engagement key narratives to be explored within the landscape are the significance of Galari- The Lachlan River, billy goat hill. local flora and fauna.

A Cultural Garden and Ceremony space has been designed, located adjacent the indigenous community room. The courtyard which includes a variety of seating areas and open spaces for gathering and ceremony. Seating has been designed to cater to individuals, small groups and larger events.

Materiality

Cowra is well known for granite and river stone. The potential use of this will be explored in the landscape as well as the brick of the existing building.

Material selection shall be made with an emphasis on durable low maintenance finishes. Materials shall be sympathetic to architectural finishes and locally appropriate. Materials shall be selected to ensure ease of ongoing maintenance and minimise opportunity for vandalism.

Seating shall be in a variety of formats for varying groups, ages, and sizes with provision of seats with back and armrests though the spaces.

Planting

Proposed planting on site will feature a mixture of locally indigenous species and exotic planting. Through the co-design process locally significant species will be incorporated species will be chosen for their suitability for the local growing conditions. All species selected shall be low allergenic and non toxic.

In broader external areas planting will be massed groups of shrubs, grasses and groundcovers, the height of planting in these spaces will consider CPTED principles to not create hiding spaces and obstructions in sightlines for pedestrians and vehicles.

All landscaped areas are to be provided with and automatic drip irrigation system to ensure viability and the ongoing health of the landscape allowing for seasonal variation, extreme weather events and less reliance on the manual maintenance regime.

Canopy Cover

The existing site has a canopy cover of 5.6% the proposed landscape scheme proposes a total canopy cover of 26.96%

33 trees are proposed for retention 37 Trees are proposed for removal, of these 24 are recommend to be replenished. The proposed landscape scheme includes 89 new trees, 20 of these will be greater than a 8m canopy.

Greener Places and Better Places Landscape Response

Designing to the *Greener Places* and *Better Placed* Design Framework for Green Infrastructure:

Following the ethos of the ‘*Greener Places*’ design framework, this project focuses on providing a development harmonious with the existing setting.

Incorporating the *Greener Places* and *Better Places* principles through the landscape design philosophy

1. Integration & Better for community

Combine green infrastructure with urban development and grey infrastructure

Tree planting and site planning of new buildings to maintain significant existing trees has been highly considered areas of canopy cover to the open space portion of the site which provide potential canopy linkages at a broader scale.

Complementary tree canopy around the proposed building will further reinforce connections.

2. Connectivity

Create an interconnected network of open space

General site circulation and open spaces shall be connected by a legible pathway network. The large community facing open space provides a amenity for hospital staff, users, visitors and the broader community. Equitable access is provided from the street front to the proposed building with seating along the journey for rest.

3. Multi functionality & Better Fit

Deliver multiple ecosystem services simultaneously

The landscape performs a variety of ecosystem services - tree canopy cover regulates the climate though minimising the heat island effect. Greater biodiversity in planting will allow for pollination and habitat creation. Culturally safe spaces have been provided to support the passing of knowledge and in particular the significance of key natural features including Galari and Billy Goat Hill.

4. Participation & Better Value

Involve stakeholders in development and implementation

Participation as a principle seeks to involve the knowledge and needs of diverse parties in relation to planning. Ongoing engagement across indigenous groups and user groups has informed key design drivers and principles explained in this document. The look and feel of the landscape is to represent the community and include opportunities for ongoing participation and evolution through time.

Clinical courtyards are being developed with local user groups. The wealth of knowledge offered within this setting ensure the design and features are relevant for the community and supported by the day to day end users.

These principles are supported by three key strategies of

- **Open space for recreation**

The open space, and cultural and gathering space provides opportunities for recreation, rest and gathering. These spaces allow for formal and informal gatherings of a variety of sizes, day and year round use of the space. Outdoor clinical spaces enable users the chance to connect with nature undertaking physical therapy outside and allow for respite.

- **Urban tree canopy**

The landscape design proposes canopy cover across the extent of the ground plane resulting in a net increase in canopy cover this is to be supported by an understory of locally native species complementing local ecologies of the area.

- **Connecting bushland and waterways**

The additional tree canopy will complement existing tree canopy in the area.

The key benefits of adopting the *Greener Places* and *Better Places* framework as a basis for this design include:

- Locally harmonious landscape character
- Consideration of micro climates within the site
- sharing of the cultural and environmental stories of the area

Design Vision & Principles



Canopy Cover & Habitat

Protect and improve canopy cover across the site
Provide habitat and green links through the site



Respect Country Narratives

Reflect the stories and needs of the local people



Biophilic Design

Facilitate connections between people and nature



Therapeutic Landscapes

Provide spaces which promote wellness and healing



Biodiversity

Enhance ecologies and showcase locally significant species

Landscape Site Plan

ED Courtyard

Respite courtyard from Emergency Department

Emergency, Service and Ambulance Entry

Pedestrian entry and forecourt

Cultural Garden & Gathering Space

Community space for gatherings and events

Dropoff and Entry

Legible entry point for drop off and pedestrian access to hospital

Liverpool Street Frontage and Carparking

Shaded carpark area



Maternity Courtyard

External space for outdoor access for maternity ward featuring locally medicinal species

Lightwell

Central courtyard to provide views and light throughout surrounding building

Rehabilitation Courtyard

Outdoor area to compliment adjacent facilities

Liverpool Street Garden

Community facing open space and accessible pathway to entry

Liverpool Street Garden



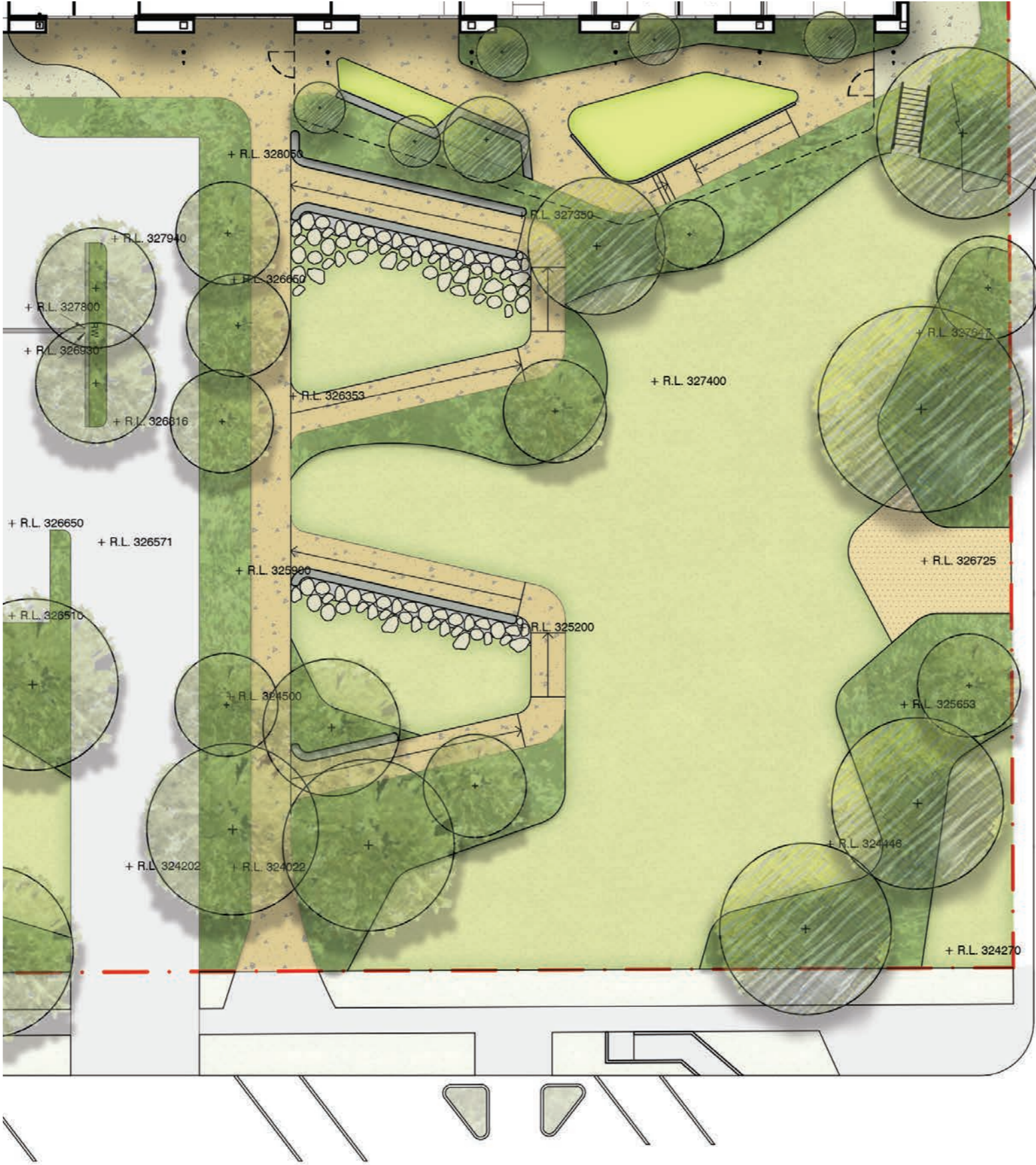
Buffer planting to carpark edge and stairs/ramp



Bench seating



Canopy tree planting



Liverpool Street

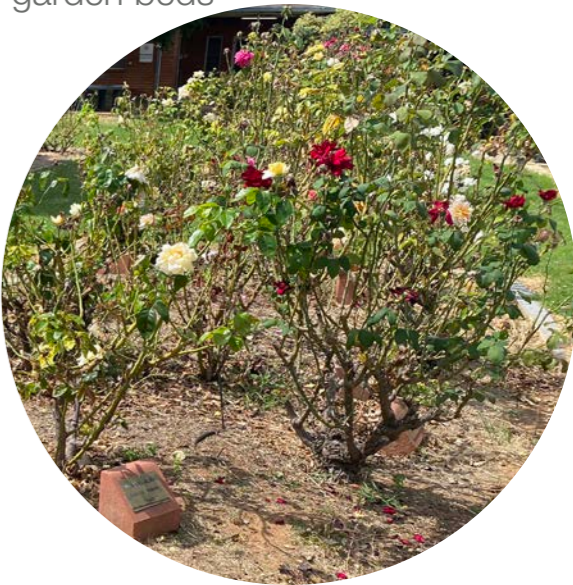
Ina Drive



Open lawn area

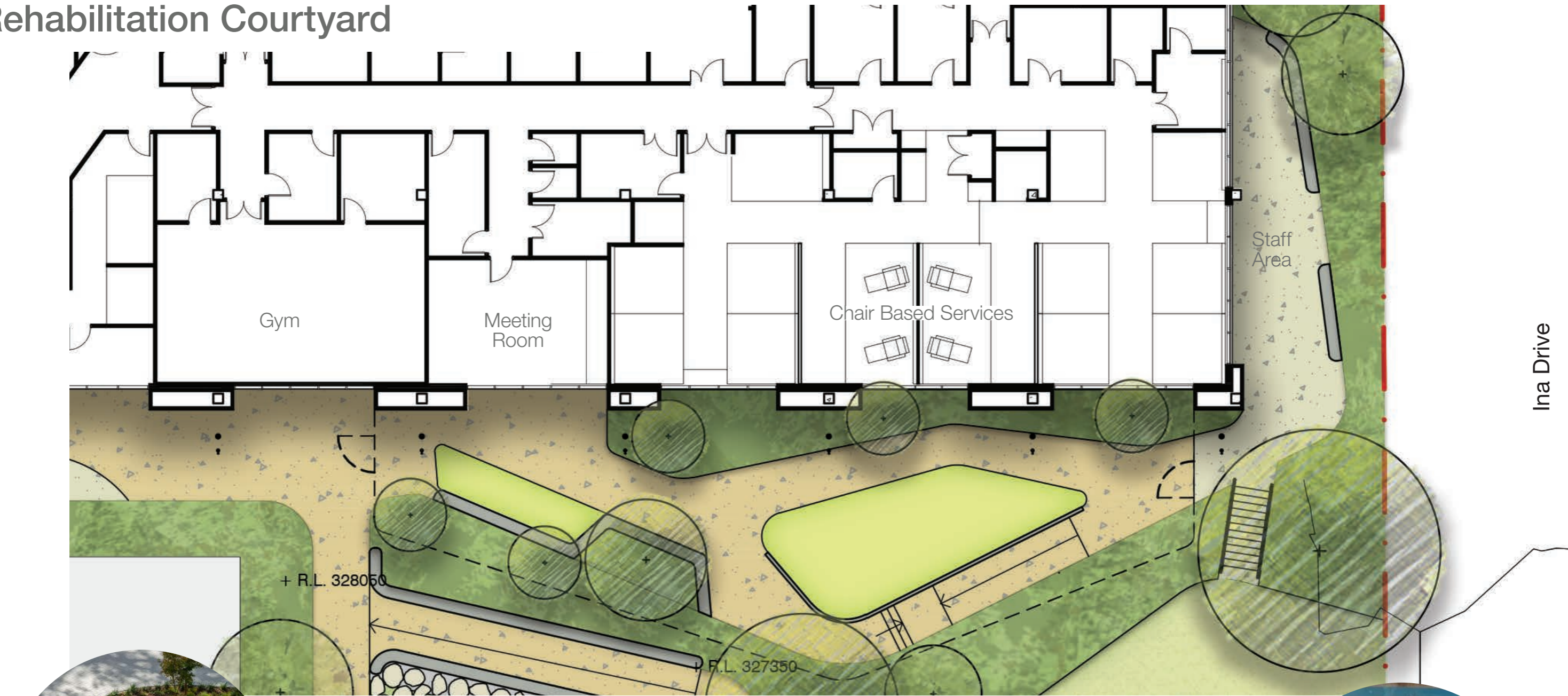


Native species and decorative boulders in garden beds



Acknowledgement of Rose Garden tradition within Cowra Hospital

Rehabilitation Courtyard



Flexible spaces for therapy and activities



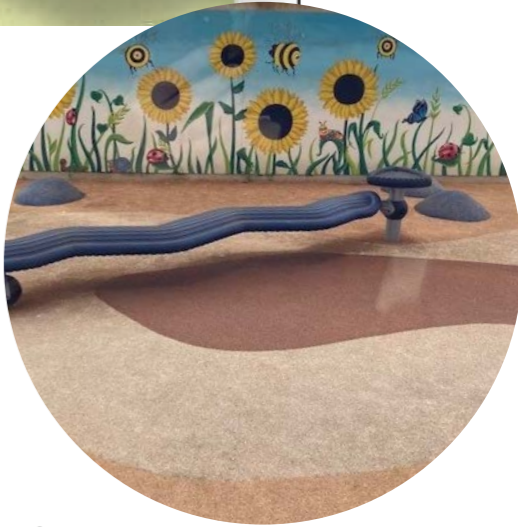
Buffer planting to public spaces



Comfortable seating



Physical therapy items such as stairs, ramps and contrasting textured pathway



Sculptural play for paediatrics



Cultural Garden and Gathering Space



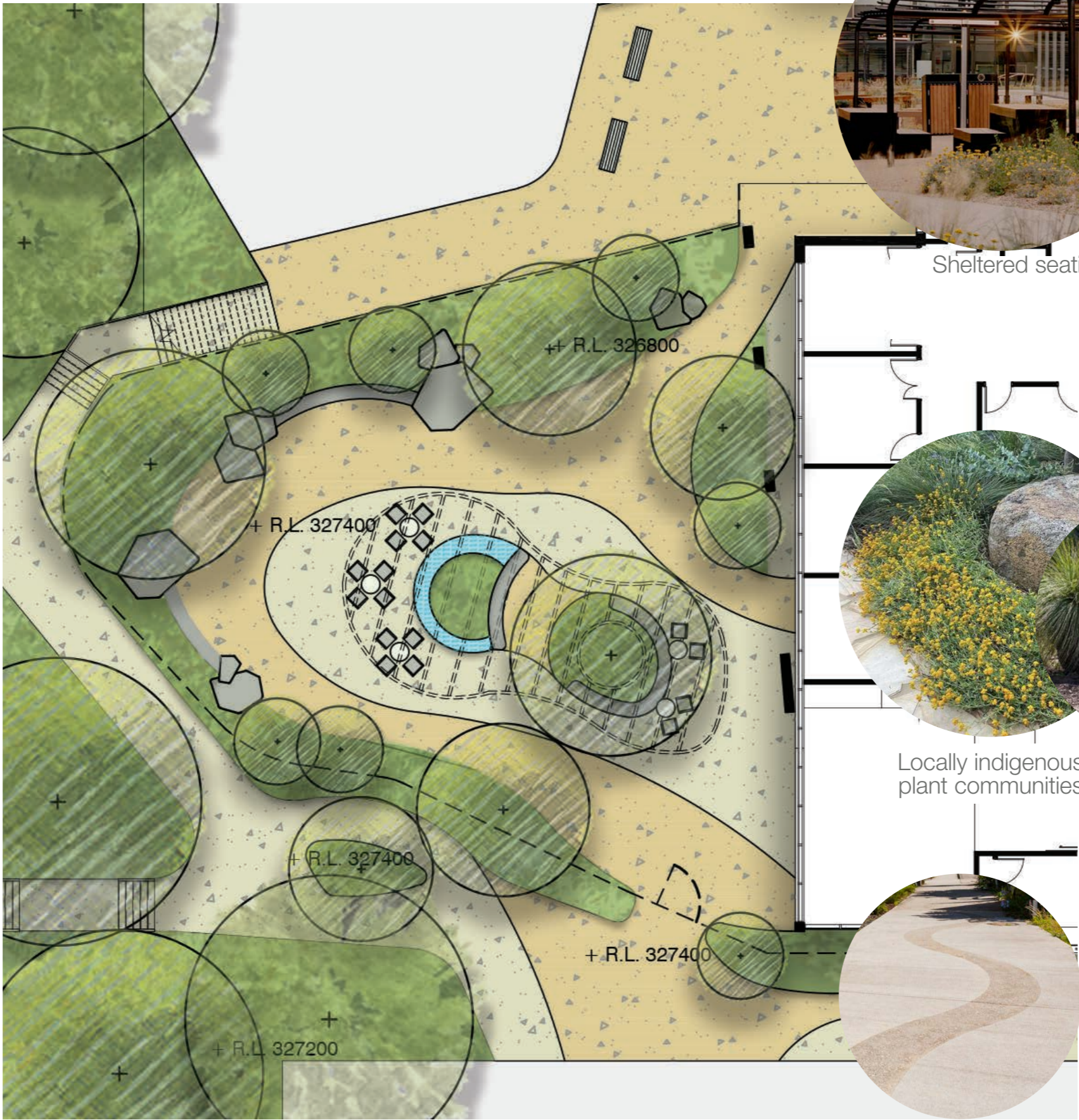
Mounding planting to retaining wall



Gathering space



Incorporation of water element



Sheltered seating



Seating for gatherings and intimate groups



Locally indigenous plant communities



River paving design

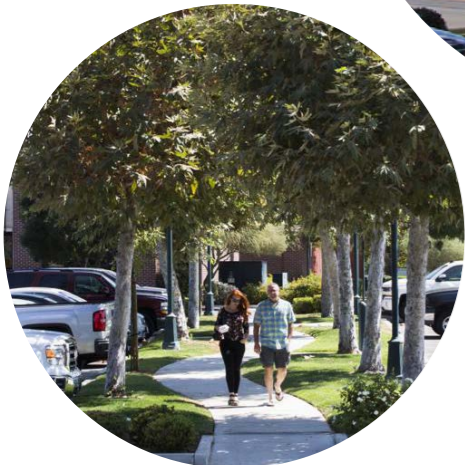


Use of local boulders as seating and features as seating and informal play

Carpark and Dropoff



Canopy tree planting for shade cover



Carpark wayfining using planting and finishes to building entry



Low understory planting



Accessible interface to pedestrian areas



Emergency Department Entry and Courtyard



Seating



Water element



Planting for green backdrop



Screening to ambulance dropoff



Lightwell Garden



River motif within landscape forms



Reinforced gravel or low level maintenance pathway to perimeter



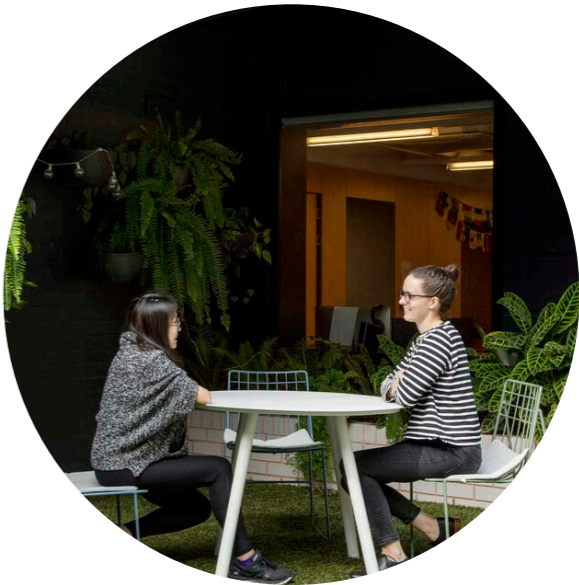
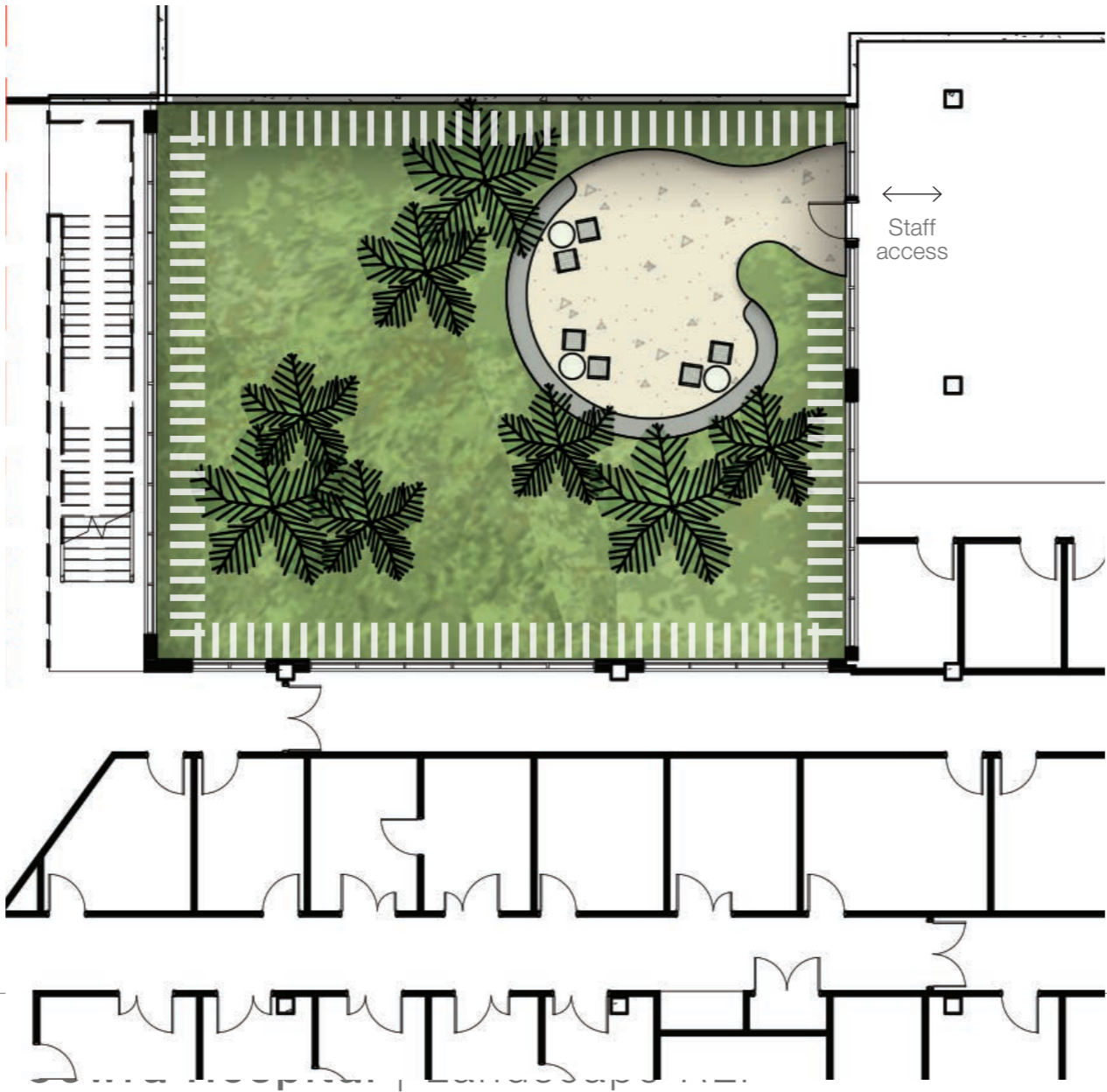
Screening planting to staff seating



Variety of local gravels and boulders



shade tolerant planting

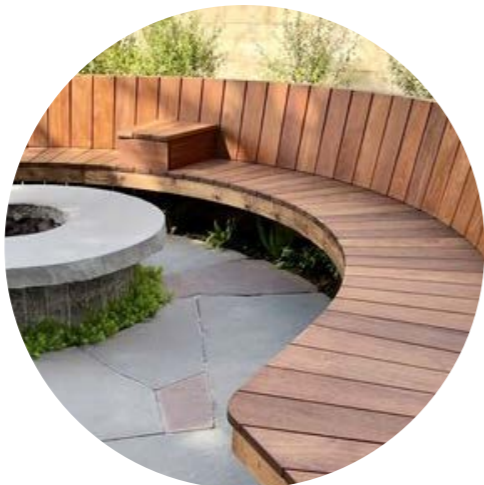


Staff seating area

Maternity Courtyard



Space for
Ceremonial feature



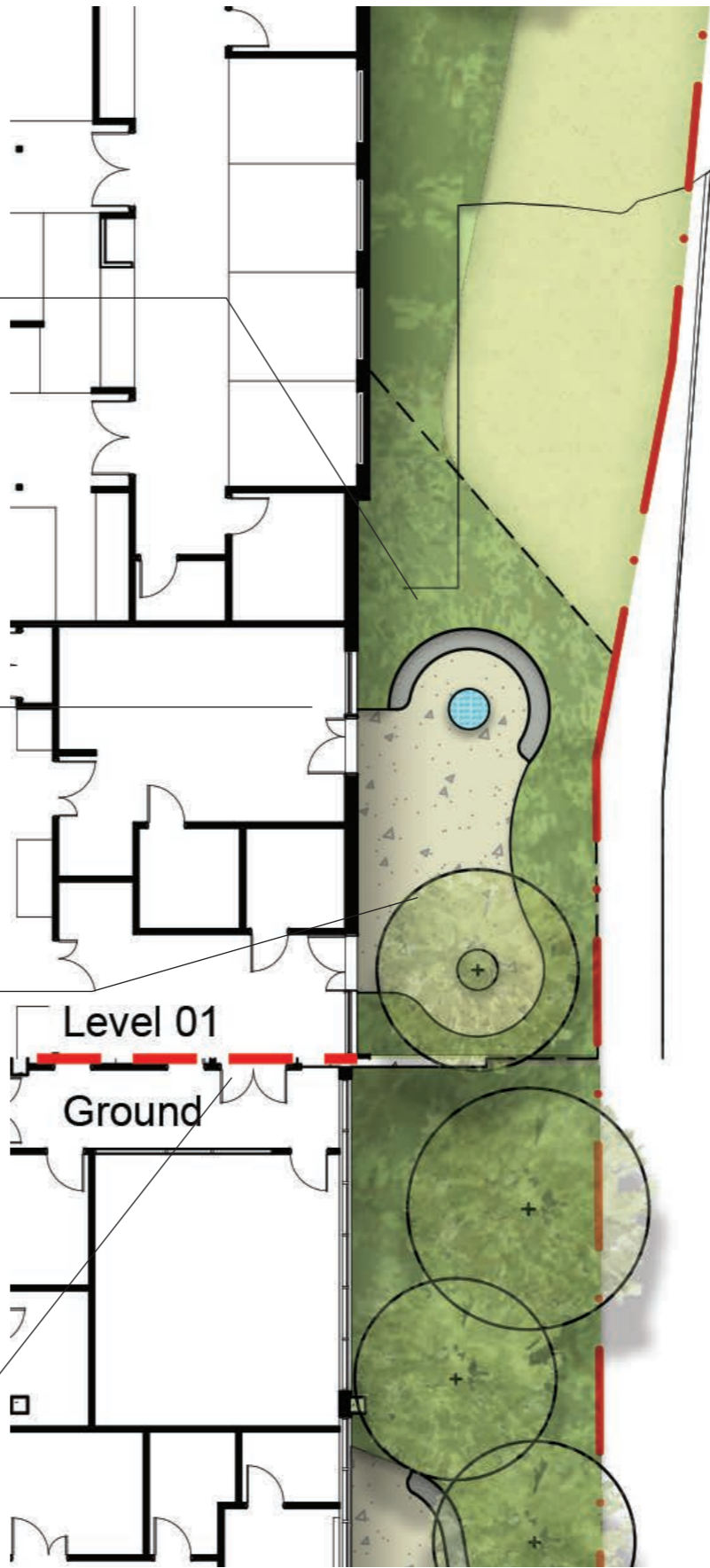
Comfortable furniture



Culturally significant
species



Secure fencing within
planting



Ina Drive



Provide outlook
from internal
spaces



Screening planting to
street and rooms



Paving with river inspired
forms

Planting and Materiality Strategy



Grassy Woodlands



Local plant communities



Durable and Inclusive furniture and materials



Locally significant food and medicinal species



Canopy Tree Planting



Natural Materials
colours of country and textures within the landscape



Indicative Plant List

Trees

Acacia deanei
Acacia decora
Acacia leucoclada
Acacia paradoxa
Acacia vestita
Acacia suaveolens
Allocasuarina verticillata
Angophora floribunda
Brachychiton populneus
Calytrix tetragona
Casuarina cunninghamiana
Casuarina glauca
Eucalyptus crebra
Eucalyptus maculata
Eucalyptus rossii
Eucalyptus sideroxylon
Melaleuca spp.

Green wattle
Western silver wattle
Northern silver wattle
Kangaroo thorn
Hairy wattle
Sweet wattle
Drooping she-oak
Rough-Barked Apple
Kurrajong
Fringe-myrtle
River Oak
Swamp Oak
Narrow –leafed Ironbark
Spotted Gum
White Gum
Red Ironbark
Myrtles or Paperbarks

Shrubs

Banksia ericifolia
Cassinia quinquefaria
Callistemon viminalis
Dodonea viscosa
Grevillea banksii
Grevillea floribunda
Grevillea lanigera
Grevillea rosmarinifolia
Kunzea parvifolia
Leptospermum. polygalifolium and *Leptospermum* spp.
Poa sieberiana
Senna artemisioides
Acacia cardiophylla
Bursaria spinosa
Grevillea juniperina
Indigofera australis
Westringia fruticosa

Heath Banksia
Cassinia
Weeping Bottlebrush
Hop Bush
Red Silky Oak
Seven Dwarfs Grevillea
Woolly Grevillea
Rosemary Grevillea
Violet Kunzea
Tea- tree
Snow grass
Silver (Desert) Cassia
Wyalong wattle
Blackthorn

Native Indigo
Coast Rosemary

Groundcovers

Chrysocephalum apiculatum
Cissus antarctica
Dianella revoluta
Lomandra longifolia
Themeda australis
Hardenbergia violacea

Yellow Buttons
Native Grass
Mauve Flax Lily
Spiny Mat-rush
Kangaroo Grass
False Sardaparilla

Bush Tucker

Austromyrtus dulcis
Chionanthus ramiflora
Citrus australasica
Citrus australasica x 'Red Centre Lime'
Davidsonia johnsonii
Diploglottis campbellii
Eucalyptus olida
Hardenbergia violacea
Mentha australis
Plectranthus graveolens
Pleiogynium timorense
Podocarpus elatus
Tetragonia tetragoniodes

Midgen Berry
Native olive
Finger lime
Blood lime
Davidson plum
Tamarind small leaf
Strawberry Gum
Native Sarsaparilla
Native River Mint
Bush Basil
Burdekin plum
Illawarra plum
Warrigal greens

BIRD
ATTRACTING

FOOD AND
MEDICINAL
SPECIES



Acacia vestita
Hairy Wattle



Diploglottis campbellii
Tamarind small leaf



Brachychiton populneus
Kurrajong



Westringia fruticosa
Coast Rosemary



Calytrix tetragona
Fringe-myrtle



Kunzea parvifolia
Violet Kunzea



Hardenbergia violacea
Native Sarsaparilla



Lomandra longifolia
Spiny Mat-rush